

## Quick Case Summary

Dr. Sebastian Horvath, Germany

CV with main diplomas and achievements

### Curriculum Vitae



Dr. Sebastian Horvath specialises in aesthetic-restorative dental treatments. He works together with his wife and father in a joint practice in Jestetten, Germany. He studied dentistry at Freiburg University, where he also obtained his doctorate. He then worked at Freiburg University Hospital as a research assistant and completed a training as a listed specialist for prosthodontics.

Dr. Horvath teaches at the University of Pennsylvania, USA, and Düsseldorf University Hospital, Germany.

Brief description of initial situation. Highlight details that impact treatment plan

A 54-year-old female patient presented at the author's office, asking for a general restoration of her teeth. As a part of this complex case the lower right quadrant was restored. The patient reported that the old restoration was placed about 20 years ago after tooth #46 was lost due to endodontic complications. A few years after the placement of the restoration tooth #45 was endodontically treated through the placed restoration. Now the patient reported an increasing sensitivity on tooth #47 due to ill-fitting margins. It was planned to restore the area with two all-ceramic crowns on teeth #45 & 47, and an implant-retained restoration in site #46. The implant-retained restoration was preferred to a new fixed dental prosthesis in order to reduce the load on the endodontically treated tooth #45 and to reduce future risks by incorporating an endodontically treated tooth in a larger restoration. Initially, a CBCT was made in order to evaluate the bone volume in the edentulous areas and to evaluate existing root canal treatments.

Two pictures to illustrate initial situation. Preferably one X-ray and one clinical. Captions of one or two sentences per picture.

### Initial Situation



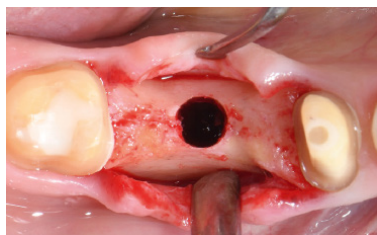
**Figure 1 - Initial Situation**

Initial radiograph showing the lower right quadrant. Note the ill-fitting margin distal on tooth #47



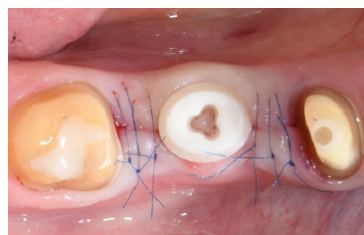
**Figure 2 - Initial Situation**

Clinical situation prior to the surgery



**Figure 3 - Surgery**

The osteotomy was performed using the drilling protocol for hard bone.



**Figure 4 - Surgery**

Wound closure

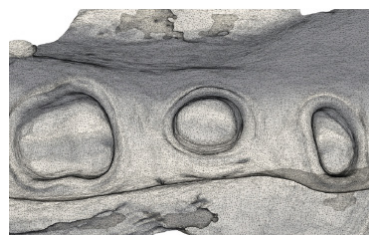
Two pictures to illustrate surgical procedure. Captions of one or two sentences per picture.

Two to three pictures to illustrate prosthetic workflow. Captions of one or two sentences per picture.



**Figure 5 - Prosthetics**

Following this build-up, the implant was prepared for a full-crown restoration just like a natural tooth.



**Figure 6 - Prosthetics**

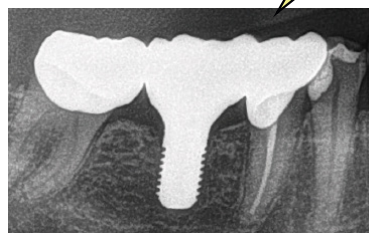
Following this build-up, the implant was prepared for a full-crown restoration just like a natural tooth.

Two to three pictures to illustrate the final result. Preferably X-ray and clinical. Follow-up X-ray after some time is encouraged. Captions of one or two sentences per picture.



**Figure 7 - Final Result**

Intra-oral view of the treatment result.



**Figure 8 - Final Result**

Radiographic evaluation of the treatment result.